



Proven pathway: Spirometry

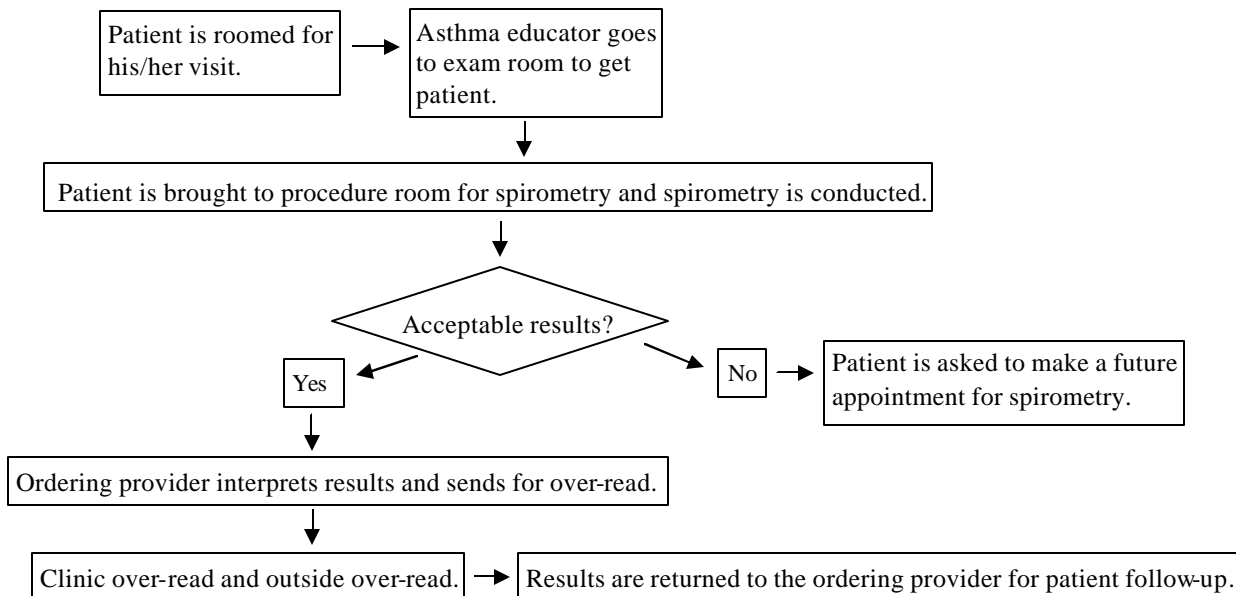
Goal: Implement spirometry for diagnosis and management of asthma

Chronic care model: Delivery system design

Snapshot

1. Patient is roomed for visit
2. Asthma educator conducts spirometry
3. Spirometry is conducted in procedure room
4. If spirometry was obtained, ordering provider interprets the results and sends it for over-read
5. First over-read occurs at clinic and then test is faxed to the University of Minnesota for second over-read
6. Over-read results are returned to the ordering provider for patient follow-up
7. If an acceptable spirometry was not obtained, a future appointment is made for repeat spirometry

Flow diagram



Implementation details/considerations

- When is spirometry scheduled or ordered?
 - Separate visit?
 - Before, during, or after provider visit?
- Where is spirometry conducted?
 - Exam room or portable spirometer?
 - Treatment/procedure room?
 - Extra space?
- Who conducts the spirometry?
 - One person trained?
 - Several persons trained?
- How is the quality of spirometry guaranteed?
 - Training of staff to conduct spirometry and determine acceptability of results
 - Limited staff conducting and interpreting
 - Empower staff to stop testing if results are unacceptable
- Who will interpret the spirometry results?
 - One or two providers skilled?
 - All providers skilled?